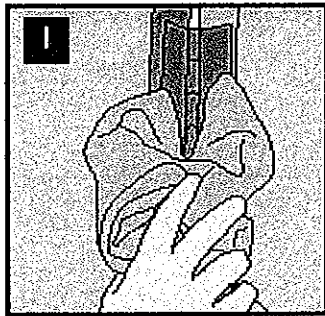


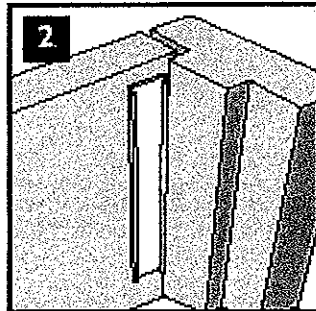
HINGESAFE FITTING INSTRUCTIONS

No responsibility can be taken by the manufacturer for incorrect operation of Hingesafe that are not fitted as per directed in these instructions

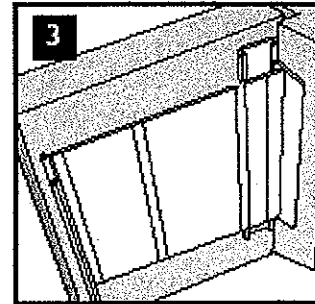
Adhesive will be adequate if the surfaces are clean and free of silicone or polish. To ensure a more secure fix use the 16 no. extra screws provided at approximately 270mm centres



1
Clean the door and door frame thoroughly

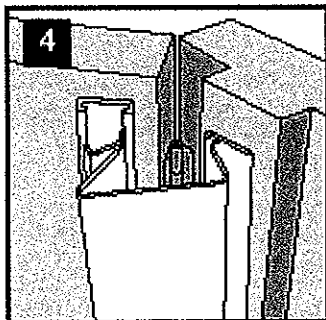


2
With door shut, stick channel into the corner of the door.

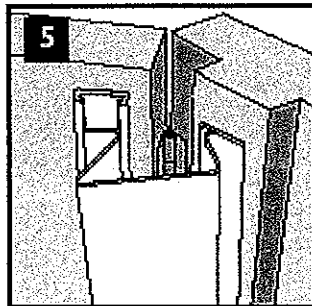


3
Stick flexible cover to door frame using edge of channel as a guide for positioning.

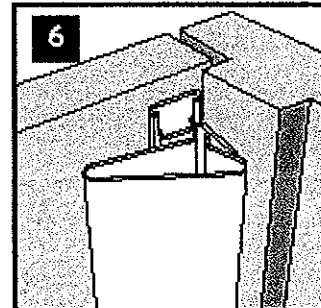
Note: For more secure fix use screws provided & screw through adhesive sections to door and frame at approximately 270mm centres



4
Open door. Line up foot on flexible cover to channel.



5
Locate and snap foot into channel on door.



6
Close door.

FITTING INSTRUCTION 4H

Finger Guards

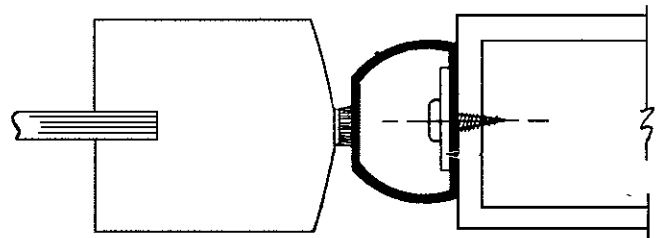
Safety Components for Automatic Doors

Larco finger guards provide added protection for your automatic door installation. The primary purpose of a finger guard is as a protective device. It limits the ability of the door to cause injury if fingers are inadvertently placed in the area between the door and frame. As an added benefit, finger guards act as a seal, isolating the interior and exterior environments when the door is closed.



Finger guard for 1" center-hung applications (96" long)

Part Number	Description	Price
0021269900	Complete Assembly	\$47.50
0021268901	Replacement Vinyl Insert	\$16.50



Door Detail

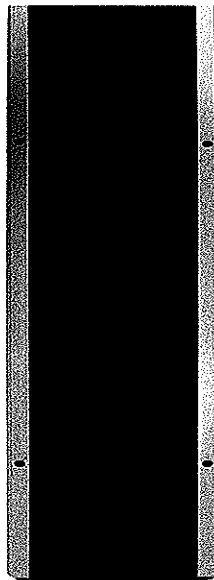
Specifications

Center Hung Applications

Center hung applications use a black vinyl "D" shaped insert and a continuous perforated aluminum bar, which acts as a clamp. Standard length for center hung finger guards is 96 inches. One assembly is needed for each door leaf.

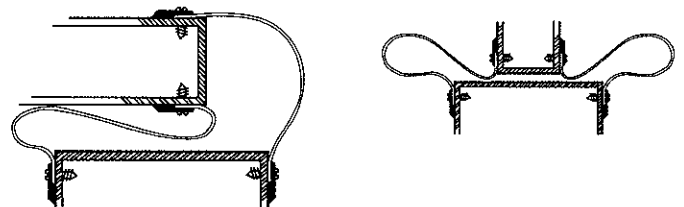
Hinge Hung Applications

Hinge hung applications use black rubberized fabric to span the gap between the doorframe and the door. Continuous perforated aluminum bars attached to both outside edges act as a clamp. Available in 5- and 10-inch widths; standard length is 84 inches. Two assemblies are needed for each door leaf.



Finger guard for hinge-hung and center pivot applications (84" long)

Part Number	Description	Price
0021098010	5" wide assembly	\$50.00
1021098010	10" wide assembly	\$75.00



Door Detail