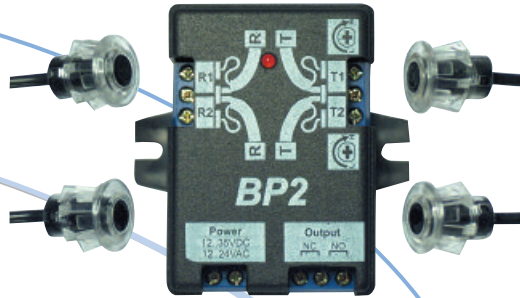


AUTOMATIC DOOR SAFETY SENSOR

Active Infrared Miniature Safety Beam Sensor



BP2



FEATURES

- One controller can operate one or two beams.
- Range from 0-12m.
- Operation 12-35V DC, 12-24V AC
- Excellent resistance to sunlight & all artificial light source.
- High resistance to water & humidity.
- The controller is operated by a microprocessor, which is immune to interference and supply voltage oscillations.
- Reduced size for ease of installation in most door profiles.
- Intelligent software means that the sensor automatically configures itself for one or two sets of beams.
- Sensor head connector for easy installation.
- Controller connections clearly marked to ensure ease of installation.
- Form C relay output with fail-safe function.
- Sensitivity Adjustment only necessary if the distance between the transmitter & receiver is less than 1m.



Excellent resistance to the negative effects of reflected sunlight and artificial light sources.

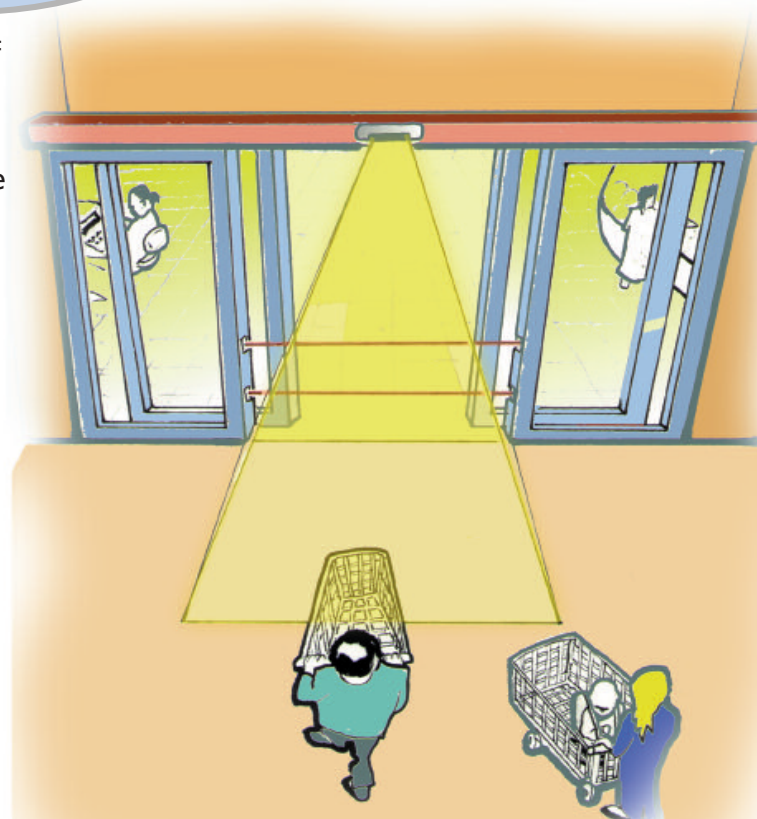


No user set-up required whether using 1 or 2 sets of beam heads.

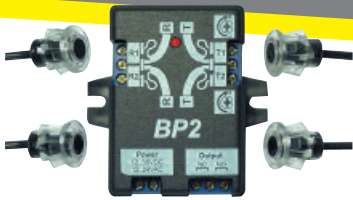


**MEETING YOUR
SENSING
REQUIREMENTS**

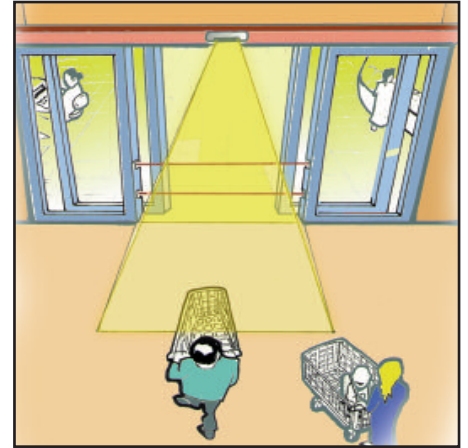
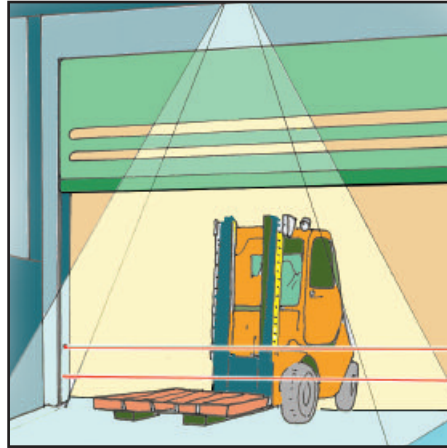
www.hotron.com



AUTOMATIC DOOR SAFETY SENSOR

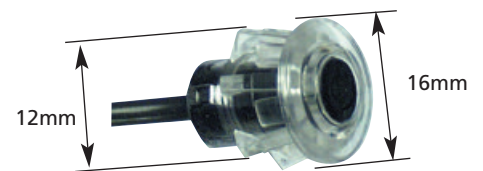
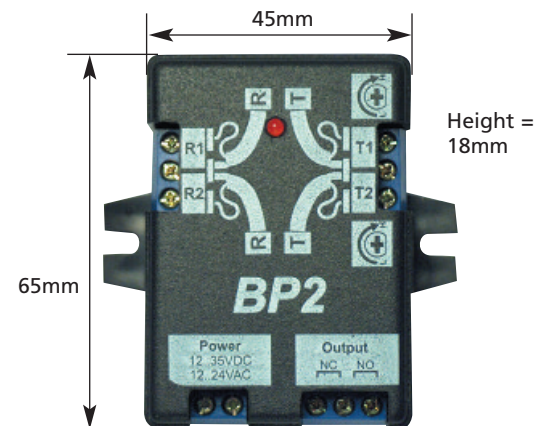


Active Infrared Miniature Safety Beam Sensor



Model	BP2-1 (One beam)	BP2-2 (Two beam)
Type	BP2-1 (one beam)	BP2-2 (two beams)
Detection method	Active Infrared 950nm	
Range	0 to 12m	
Power supply	12V-35V DC, 12V-24V AC	
Power consumption	<70mA	<80mA
Output relay	1C type (one switching contact) 50V DC; 0,1A (resistance load)	
Response time for beam's breaking	100ms	
Response time to passage's release	200ms	
Min. output relay operating time	0.3 sec	
Cables' length	Standard: 6m L version (e.g. BP2-1L) : 12m	
Sunlight resistance	150'000 Lux	
Artificial light resistance	50'000 Lux	
Header's colour	transparent	
Controller's cover colour	black	
Operating temperature	-35°C to +55°C	
Sensitivity adjustment	independent for both beams	
Equipment	One controller One set of headers with cables Montage sponge Two screws 2,9x9mm Instruction	One controller Two sets of headers with cables Montage sponge Two screws 2,9x9mm Instruction
Weight	235g	370g

Dimensions



NOTE: Specifications may change without prior notice



HOTRON IRELAND LTD.

26 Dublin Street, Carlow, Ireland.
Tel: +353-(0)59-9140345 · Fax: +353-(0)59-9140543
URL: <http://www.hotron.com>

HOTRON CO. LTD.

1-11-26 Hyakunin-Cho Shinjuku-ku, Tokyo 169-0073, Japan.
Tel: +81-3-5330-9221 · Fax: +81-3-5330-9222
URL: <http://www.hotron.co.jp>